

BROOKE TOTE BAG

Angie Juda | Chic n Scratch



chicnscratch.com
chicnscratch

[CLICK HERE TO WATCH THE "HOW TO" VIDEO](#)

chicnscratch.com

BROOKE TOTE BAG MEASUREMENTS

	SMALL	MEDIUM	MEDIUM WIDE	MEDIUM TALL	LARGE
Front Fabric	11" x 8"	11" x 10"	12-1/2" x 9"	13" x 11"	15" x 11"
Fusible Fleece	11" x 8"	11" x 10"	12-1/2" x 9"	13" x 11"	15" x 11"
Lining Fabric	11" x 8"	11" x 10"	12-1/2" x 9"	13" x 11"	15" x 11"
Interfacing	10-3/4" x 7-3/4"	10-3/4" x 9-3/4"	12-1/4" x 8-3/4"	12-3/4" x 10-3/4"	14-3/4" x 10-3/4"
Handles	3" x 9"	3" x 15"	3" x 19"	3" x 16"	3" x 19"
Fusible Fleece Handles	1" x 9"	1" x 15"	1" x 19"	1" x 16"	1" x 19"
Spacing for handles	2"	2-1/4"	2-1/2"	2"	3"
Box Corner	1-1/2"	2"	1-1/2"	2"	2"

Bernina Sewing Machine

- Oliso TG1600 Pro Plus 1800 Watt SmartIron - <https://amzn.to/3qprB3C>
- Riley Blake Bird Pins - <https://amzn.to/45EjBMp>
- Wonder Clips - <https://amzn.to/3WPzv2v>
- Creative Grids Ruler 4-1/2" x 8-1/2" - <https://amzn.to/3IT63C>
- Creative Grids Ruler for cutting fabric 12-1/2" x 24-1/2" - <https://amzn.to/43JE0xL>
- Rotary Cutter - <https://amzn.to/3oInC1t>
- Erasable Marker - <https://amzn.to/3IPxIEL>
- Sleeve Ironing Board - <https://amzn.to/3P1kIVE>
- Scissors - Westcott Heavy Duty Carbo Titanium
- Creative Grids Ruler - 3-1/2" x 6-1/2" - <https://amzn.to/2WF6Ty0>
- Fusible Fleece - Pelon 987 - <https://amzn.to/3kLn9G1>
- Fusible Interfacing - <https://amzn.to/3CyP8j3>
- Ironing Board - <https://amzn.to/3yxPc0g>
- Label - Dutch Label Shop - <https://www.dutchlabelshop.com/>
- It's Sew Emma Sew While It's Hot Rest - <https://amzn.to/46Kr8K6>
- Hot Hem Ruler - <https://amzn.to/3POX0H8>



Video tutorial was made using the Medium Wide Tote.



Assembly Instructions

1. Choose your fabric - two patterns that coordinate.
2. Cut fabric and fusible fleece and interfacing.
3. Start with the front fabric and press the fusible fleece to the backside of the fabric. Pin or clip and sew the two pieces together at the bottom using a 1/4" seam.
4. Add the label (optional). **Fig. A** Sew the sides together (left and right).
5. Now the lining fabric... press the interfacing to the lining fabric. Sew the two pieces together and leave an opening in the bottom to turn the bag right sides out. **Fig. B**
6. Now it's time to box the corners, do this on both pieces (front fabric and lining fabric). Use a ruler and erasable marker to mark **1-1/2"**. **Fig. C**
7. Cut out the corners, bring together, pin/clip and sew. **Fig. D**
8. Turn the front fabric right sides out.



Fig. A Optional label.

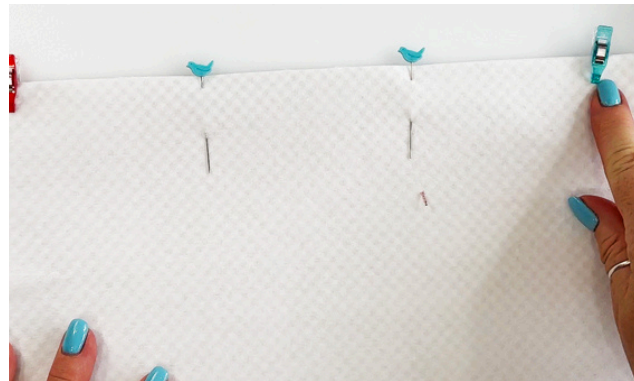


Fig. B Lining fabric - leave space to turn bag right sides out.

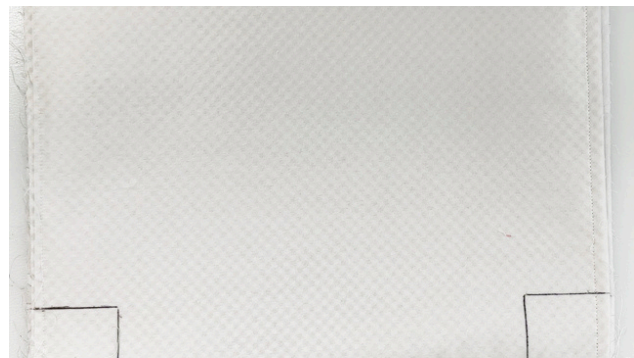


Fig. C Boxing corners - mark 1-1/2"

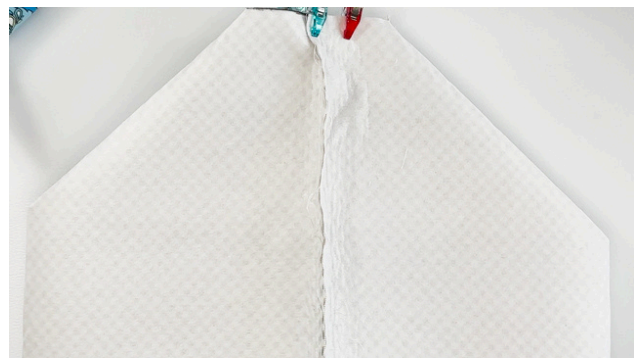


Fig. D Bring corners together, pin and sew.

TIPS

- *Press your fabric before cutting.*
- *When adding label make sure you add it high enough that you don't cut it when you're cutting the corners to box them.*

Instructions continued

1. For the handles - fold in half and press. Fold sides down 1/4", press and add Fusible Fleece, press and then stitch on both sides with 1/8" seam.
2. Add the handle to the front fabric - use pins and clips. The tote measures 12" across - mark it with a pin at 6" - then pin to the left and right of that at 2-1/2". Sew the handles on the tote. **Fig.A & Fig. B**
3. Layering - Front fabric is placed right sides facing out. Lining fabric is right sides facing in. Place the outside (front) fabric, inside the lining. **Fig C.** Pin and sew across the top using 1/4" seam.
4. Pull the Tote through the opening at the bottom. Stitch the opening on the lining closed.
5. Top stitch across the top edge of the bag with a 1/4" seam.

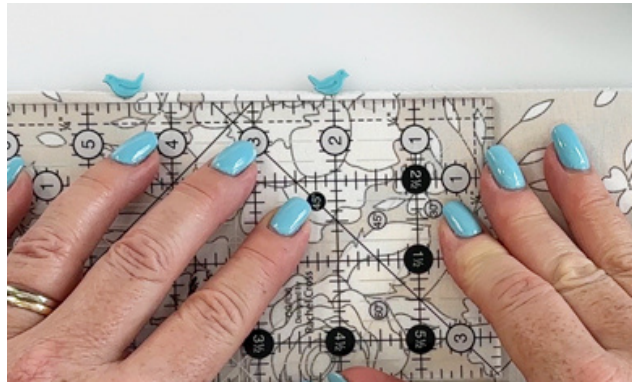


Fig. A Measure & pin at 2-1/2" from center on left and right.



Fig. B Lining fabric - leave space to turn bag right sides out.



1. Fig. C Place the outside fabric, instead the lining.

Our video tutorial should answer most of your questions.



helpdesk@chicnscratch.com



BROOKE TOTE BAG



The Brooke Tote Bag was named after my daughter Brooke and we have five sizes (only four is shown in the picture and it's missing the largest tote bag). We changed the handles for each tote and couldn't decide which was our favorite. Make a few of them and see which is your favorite!

Use our QR code with your smart phone camera to watch the video tutorial.





BROOKE TOTE BAG



[CLICK HERE TO WATCH THE "HOW TO" VIDEO](#)

Angie Juda | Chic n Scratch